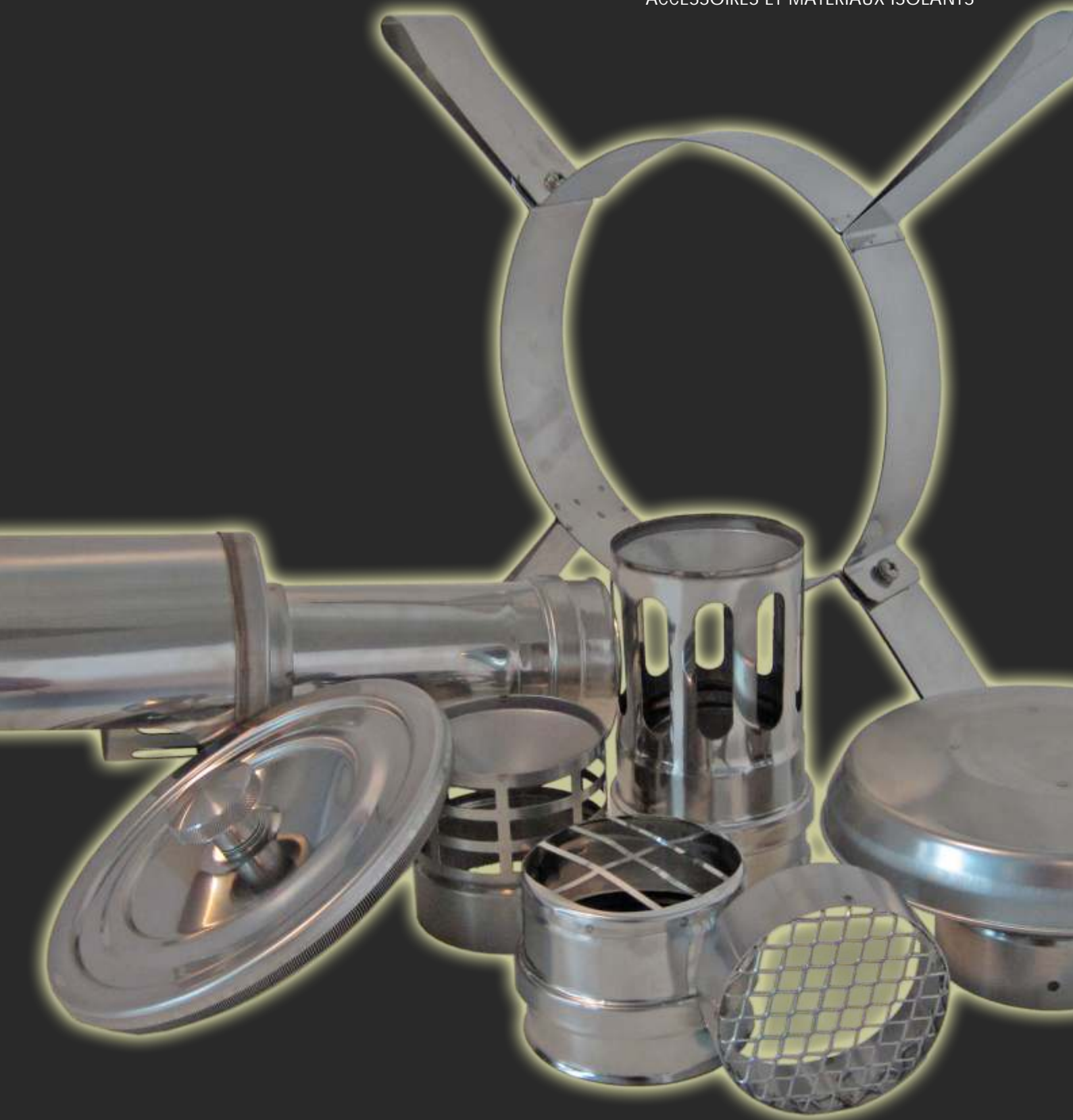
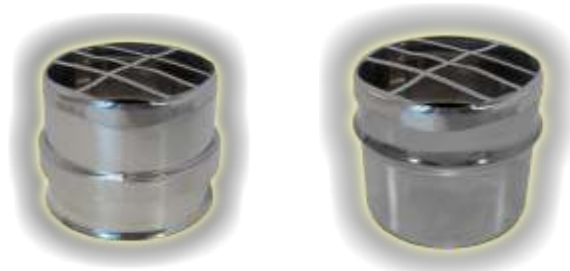
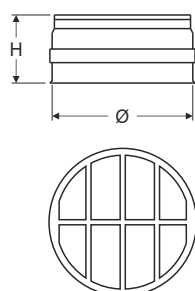


ACCESSORI E MATERIALI ISOLANTI

ACCESSORIES AND INSULATING MATERIALS
ACCESSOIRES ET MATÉRIAUX ISOLANTS

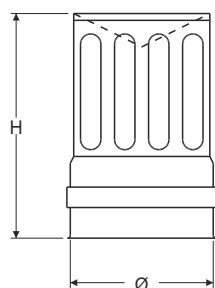


Griglia / Simple Terminal / Grille



| Cod. maschio Code male Réf mâle | Cod. femmina Code female Réf femelle | Ø | H |
|---------------------------------------|--|-----|----|
| GR80M | GR80F | 80 | 70 |
| GR100M | GR100F | 100 | 70 |
| GR120M | GR120F | 120 | 80 |
| GR130M | GR130F | 130 | 80 |
| GR140M | GR140F | 140 | 80 |
| GR150M | GR150F | 150 | 80 |
| GR160M | GR160F | 160 | 80 |
| GR180M | GR180F | 180 | 80 |
| GR200M | GR200F | 200 | 80 |
| GR220M | GR220F | 220 | 80 |
| GR230M | GR230F | 230 | 80 |
| GR250M | GR250F | 250 | 80 |
| GR300M | GR300F | 300 | 80 |
| GR350M | GR350F | 350 | 80 |

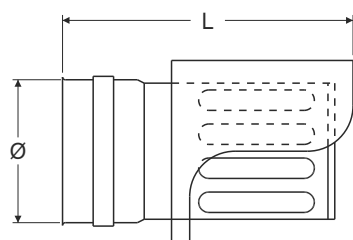
Terminale / Terminal / Terminal



| Cod. maschio Code male Réf mâle | Cod. femmina Code female Réf femelle | Ø | H |
|---------------------------------------|--|-----|-----|
| TR80M | TR80F | 80 | 150 |
| TR100M | TR100F | 100 | 170 |
| TR120M | TR120F | 120 | 210 |
| TR130M | TR130F | 130 | 210 |
| TR140M | TR140F | 140 | 210 |
| TR150M | TR150F | 150 | 210 |

Terminale orizzontale con protezione monoparete

Single wall horizontal terminal with single wall protection / Terminal à bec avec protection simple paroi

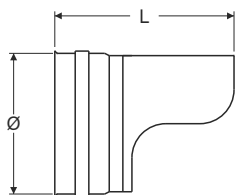


| Cod. maschio Code male Réf mâle | Cod. femmina Code female Réf femelle | Ø | L |
|---------------------------------------|--|-----|-----|
| TOP80M | TOP80F | 80 | 227 |
| TOP100M | TOP100F | 100 | 268 |
| TOP120M | TOP120F | 120 | 270 |
| TOP130M | TOP130F | 130 | 285 |
| TOP140M | TOP140F | 140 | 285 |
| TOP150M | TOP150F | 150 | 295 |

Per versione vernice nera aumento 35%
Black painted + 35%
Peint noir + 35%



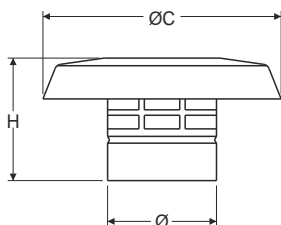
Terminale orizzontale monoparete / Single wall horizontal terminal / Terminal à bec simple paroi



| Cod. maschio Code male Réf mâle | Cod. femmina Code female Réf femelle | Ø | H |
|---------------------------------------|--|-----|-----|
| TO80M | TO80F | 80 | 150 |
| TO100M | TO100F | 100 | 165 |
| TO120M | TO120F | 120 | 180 |
| TO130M | TO130F | 130 | 187 |
| TO140M | TO140F | 140 | 195 |
| TO150M | TO150F | 150 | 202 |
| TO160M | TO160F | 160 | 210 |
| TO180M | TO180F | 180 | 225 |
| TO200M | TO200F | 200 | 240 |
| TO220M | TO220F | 220 | 255 |
| TO230M | TO230F | 230 | 262 |
| TO250M | TO250F | 250 | 277 |
| TO300M | TO300F | 300 | 315 |
| TO350M | TO350F | 350 | 352 |
| TO400M | TO400F | 400 | 380 |

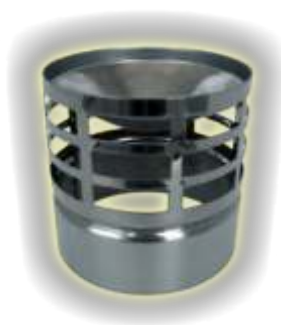
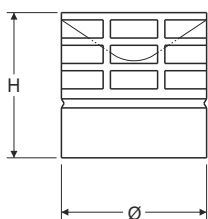
Per versione vernice nera aumento 35%
Black painted + 35%
Peint noir + 35%

Terminale scarico a tetto femmina / Female roof terminal / Terminal de toit femelle



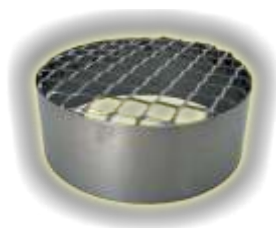
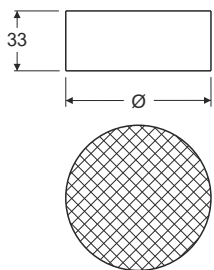
| Cod./Code/Réf. | Ø | ØC | H |
|----------------|-----|-----|----|
| TST80 | 80 | 175 | 90 |
| TST100 | 100 | 175 | 90 |

Terminale scarico a parete femmina / Female wall terminal / Terminal mural femelle



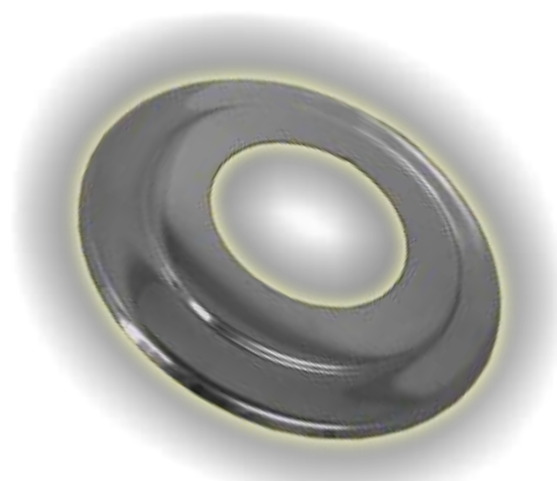
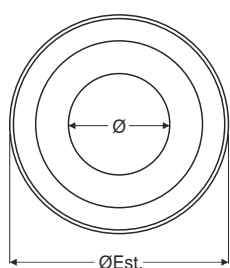
| Cod./Code/Réf. | Ø | H |
|----------------|-----|----|
| TSP80 | 80 | 80 |
| TSP100 | 100 | 80 |

Griglia aspirazione femmina / Female aspiration grid / Grille d'aspiration femelle



| Cod./Code/Réf. | Ø |
|----------------|-----|
| GA80 | 80 |
| GA100 | 100 |

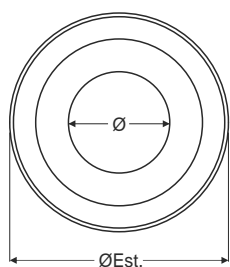
Rosone inox / Stainless steel rose / Rosace en acier inox



Articolo lavorato come da foto fino al Ø 200; dal Ø 220 liscio, non stampato
 Item finished as picture up to Ø 200; over Ø 200 it is smooth.
 Article fabriqué comme la photo jusqu'au Ø 200; il est lisse avec un diamètre plus grand de 200.

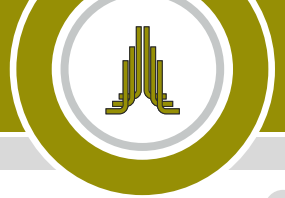
| Cod./Code/Réf | Ø | ØEst. |
|---------------|-----|-------|
| MPROS80 | 80 | 176 |
| MPROS100 | 100 | 196 |
| MPROS120 | 120 | 265 |
| MPROS130 | 130 | 265 |
| MPROS140 | 140 | 265 |
| MPROS150 | 150 | 265 |
| MPROS160 | 160 | 265 |
| MPROS180 | 180 | 269 |
| MPROS200 | 200 | 300 |
| MPROS220 | 220 | 320 |
| MPROS230 | 230 | 330 |
| MPROS250 | 250 | 350 |
| MPROS300 | 300 | 400 |

Rosone rame / Copper rose / Rosace en cuivre

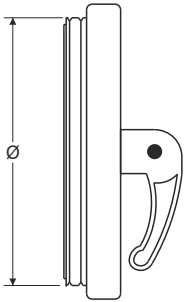


Articolo lavorato come da foto fino al Ø 200; dal Ø 220 liscio, non stampato
 Item finished as picture up to Ø 200; over Ø 200 it is smooth.
 Article fabriqué comme la photo jusqu'au Ø 200; il est lisse avec un diamètre plus grand de 200.

| Cod./Code/Réf | Ø | ØEst. |
|---------------|-----|-------|
| RROS80 | 80 | 176 |
| RROS100 | 100 | 196 |
| RROS120 | 120 | 265 |
| RROS130 | 130 | 265 |
| RROS140 | 140 | 265 |
| RROS150 | 150 | 265 |
| RROS160 | 160 | 265 |
| RROS180 | 180 | 269 |
| RROS200 | 200 | 300 |
| RROS220 | 220 | 320 |
| RROS230 | 230 | 330 |
| RROS250 | 250 | 350 |
| RROS300 | 300 | 400 |

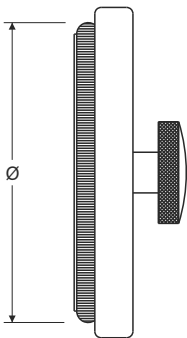


Tappo tondo di ispezione inox / Stainless steel plug for inspection / Trappe d'inspection en acier inox



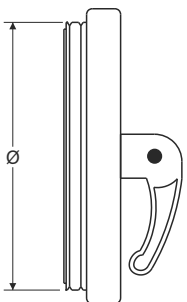
| Cod./Code/Réf | Ø |
|---------------|-----|
| TTISP80I | 80 |
| TTISP100I | 100 |
| TTISP120I | 120 |
| TTISP130I | 130 |
| TTISP140I | 140 |
| TTISP150I | 150 |
| TTISP160I | 160 |
| TTISP180I | 180 |
| TTISP200I | 200 |
| TTISP250I | 250 |
| TTISP300I | 300 |

Tappo tondo di ispezione HT inox
Stainless steel HT plug for inspection / Trappe d'inspection HT en acier inox



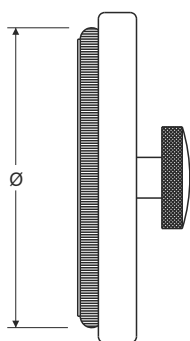
| Cod./Code/Réf | Ø |
|---------------|-----|
| TTISP80IHT | 80 |
| TTISP100IHT | 100 |
| TTISP120IHT | 120 |
| TTISP130IHT | 130 |
| TTISP140IHT | 140 |
| TTISP150IHT | 150 |
| TTISP160IHT | 160 |
| TTISP180IHT | 180 |
| TTISP200IHT | 200 |
| TTISP250IHT | 250 |
| TTISP300IHT | 300 |

Tappo tondo di ispezione rame / Copper plug for inspection / Trappe d'inspection en cuivre



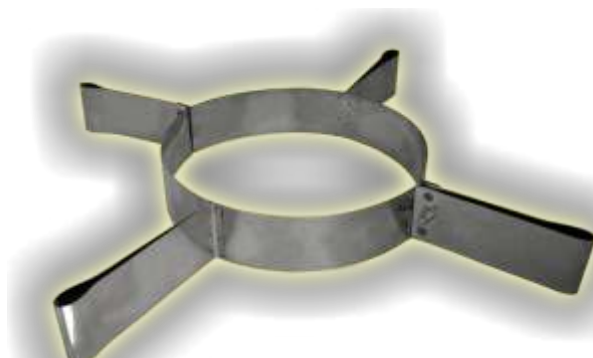
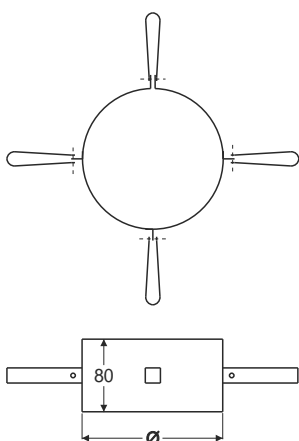
| Cod./Code/Réf | Ø |
|---------------|-----|
| TTISP80R | 80 |
| TTISP100R | 100 |
| TTISP120R | 120 |
| TTISP130R | 130 |
| TTISP140R | 140 |
| TTISP150R | 150 |
| TTISP160R | 160 |
| TTISP180R | 180 |
| TTISP200R | 200 |
| TTISP250R | 250 |
| TTISP300R | 300 |

Tappo tondo di ispezione HT rame / Copper HT plug for inspection / Trappe d'inspection HT en cuivre



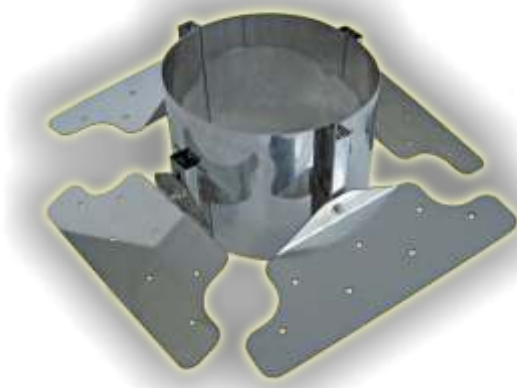
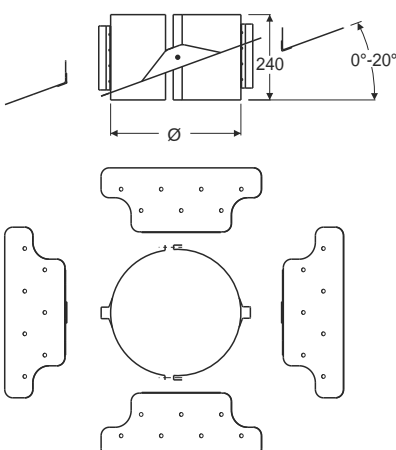
| Cod./Code/Réf | Ø |
|---------------|-----|
| TTISP80RHT | 80 |
| TTISP100RHT | 100 |
| TTISP120RHT | 120 |
| TTISP130RHT | 130 |
| TTISP140RHT | 140 |
| TTISP150RHT | 150 |
| TTISP160RHT | 160 |
| TTISP180RHT | 180 |
| TTISP200RHT | 200 |
| TTISP250RHT | 250 |
| TTISP300RHT | 300 |

Fascia di centraggio / Centering clamp / Collier de centrage

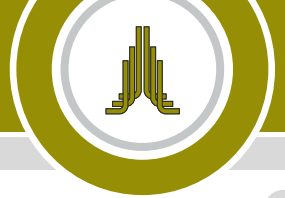


| Cod./Code/Réf. | Ø |
|----------------|-----|
| MPCEN80 | 80 |
| MPCEN100 | 100 |
| MPCEN120 | 120 |
| MPCEN130 | 130 |
| MPCEN140 | 140 |
| MPCEN150 | 150 |
| MPCEN160 | 160 |
| MPCEN180 | 180 |
| MPCEN200 | 200 |
| MPCEN220 | 220 |
| MPCEN230 | 230 |
| MPCEN250 | 250 |
| MPCEN300 | 300 |
| MPCEN350 | 350 |

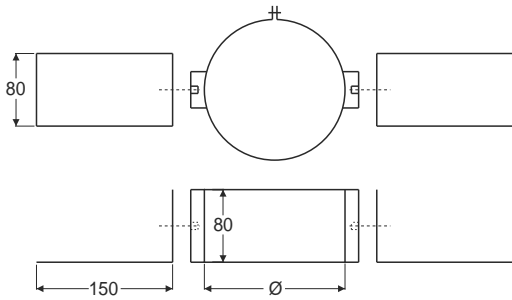
Fascia di sostegno regolabile / Adjustable roof support / Bride de fixation réglable



| Cod./Code/Réf. | Ø Int. | Ø Est. |
|----------------|--------|--------|
| MPFSREG130 | 80 | 130 |
| MPFSREG140 | 100 | 140 |
| MPFSREG150 | 120 | 150 |
| MPFSREG160 | 130 | 160 |
| MPFSREG180 | 140 | 180 |
| MPFSREG200 | 150 | 200 |
| MPFSREG230 | 180 | 230 |
| MPFSREG250 | 200 | 250 |
| MPFSREG300 | 250 | 300 |
| MPFSREG350 | 300 | 350 |



Fascia di sostegno semplice / Galvanized steel roof support / Support au toit



| Cod./Code/Réf. | Ø |
|----------------|-----|
| MPFSREG80S | 80 |
| MPFSREG100S | 100 |
| MPFSREG120S | 120 |
| MPFSREG130S | 130 |
| MPFSREG140S | 140 |
| MPFSREG150S | 150 |
| MPFSREG160S | 160 |
| MPFSREG180S | 180 |
| MPFSREG200S | 200 |
| MPFSREG220S | 220 |
| MPFSREG230S | 230 |
| MPFSREG250S | 250 |
| MPFSREG300S | 300 |
| MPFSREG350S | 350 |

Coppelle in feltro di vetro agugliato sp.13
Fiberglass needled cupels 13 thickness / Feutre en verre - épaisseur 13



Spessore 13 mm
13 mm thickness
Épaisseur 13 mm

| Cod./Code/Réf | Ø |
|---------------|-----|
| CFVA80 | 80 |
| CFVA100 | 100 |
| CFVA120 | 120 |
| CFVA130 | 130 |
| CFVA140 | 140 |
| CFVA150 | 150 |
| CFVA160 | 160 |
| CFVA180 | 180 |
| CFVA200 | 200 |
| CFVA220 | 220 |
| CFVA250 | 250 |
| CFVA300 | 300 |

Temperatura di esercizio max 550°C
Max operating temperature is 550°C
La température max de fonctionnement est 550°C

Fibra alta temperatura sp.25
High temperature fibre - 25 thickness / Fibre haute température - épaisseur 25 mm

Rotoli confezionati in scatole
Rolls packed in boxes
Rouleaux emballés en boîtes



| Cod./Code/Réf | H | L / mt |
|---------------|-----|--------|
| FAT25 | 610 | 7.315 |

Spessore 25 mm
25 mm thickness
Épaisseur 25 mm

Temperatura di esercizio max 1100°C
Max operating temperature is 1100°C
La température max de fonctionnement est 1100°C

Coppelle in lana di roccia rivestite in alluminio sp.30
 Rock wool cupels - 30 thickness / Polypropilène avec décalage en fonte - épaisseur 30

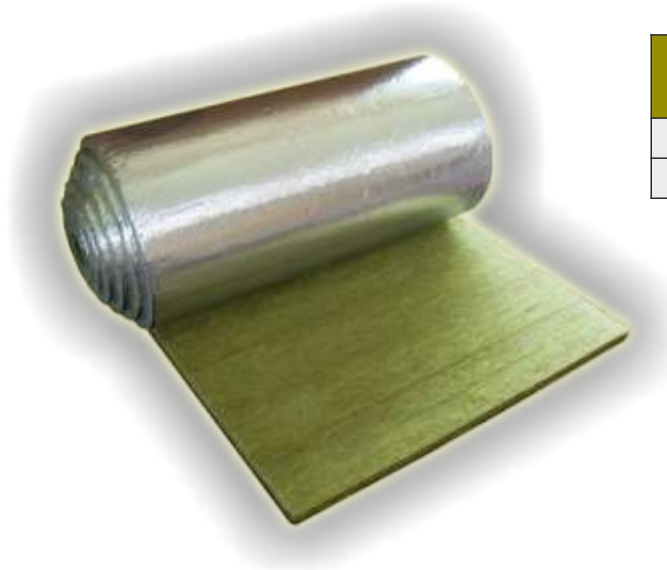


Spessore 30 mm
 30 mm thickness
 Épaisseur 30 mm

| Cod./Code/Réf | Ø |
|---------------|-----|
| CLRA80 | 80 |
| CLRA100 | 100 |
| CLRA120 | 120 |
| CLRA130 | 130 |
| CLRA140 | 140 |
| CLRA150 | 150 |
| CLRA160 | 160 |
| CLRA180 | 180 |
| CLRA200 | 200 |
| CLRA220 | 220 |
| CLRA250 | 250 |
| CLRA300 | 300 |

Temperatura di esercizio max 300°C
 Max operating temperature is 300°C
 La température max de fonctionnement est 300°C

Feltro lamellare in lana di roccia densità 50 kg/m³
 50 kg/m³ density felt reed rock wool / Feutre en polypropilène à densité 50 kg/m³



| Cod. Code/Réf | spessore thickness épaisseur | H | L / mt |
|------------------|------------------------------------|------|--------|
| FELTRO20 | 20 | 1000 | 10 |
| FELTRO30 | 30 | 1000 | 8 |

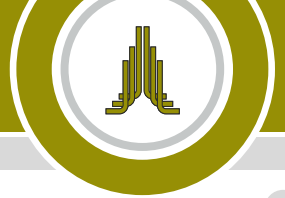
Temperatura di esercizio max 300°C
 Max operating temperature is 300°C
 La température max de fonctionnement est 300°C

Rotoli confezionati in sacco
 Rolls packed in sacks
 Rouleaux emballés en sacs

Siliconi / Silicones / Silicones



| Cod./Code/Réf. |
|----------------|
| SIL300 |
| SIL1000 |



Nastro alluminio 50x50 / 50x50 aluminum tape / Ruban en aluminium 50x50



| Cod. Code Réf | altezza height hauteur | lunghezza length longueur |
|---------------------|------------------------------|---------------------------------|
| NA50 | 50 | 50 |

Raccordo porta pirometro 3/8
Airtight fitting for pyrometer with gasket and nut / Clôture pour pyromètre avec joint



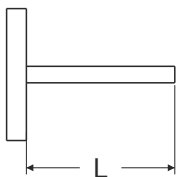
| Cod./Code/Réf. |
|----------------|
| RPP |

Raccordo analisi fumi 3/8 più tappo
Fitting for flue sampling with gasket, plug 3/8" / Clôture pour l'analyse des fumées avec joint



| Cod./Code/Réf. |
|----------------|
| RAP |

Pirometro 0-500 gambo L.90 - gambo L.200
Pyrometer 0-500 length 90mm - length 200mm / Pyromètre 0-500 Longueur 90mm - Longueur 200mm



| Cod./Code/Réf. | L |
|----------------|-----|
| PIR500-90 | 90 |
| PIR500-200 | 200 |